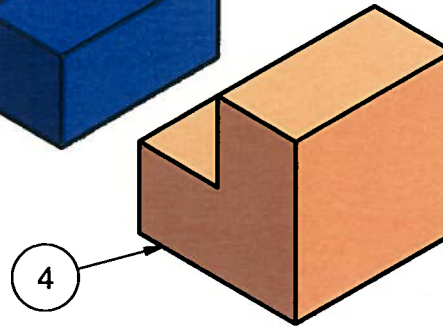
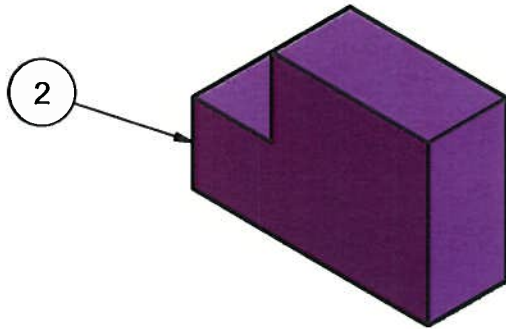
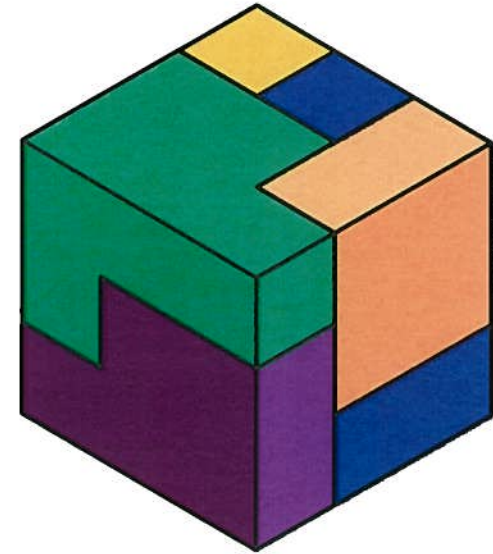
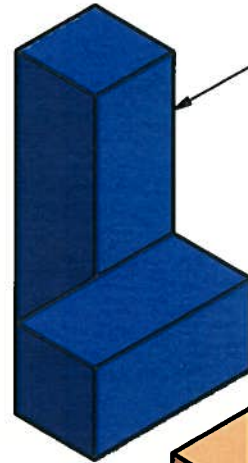
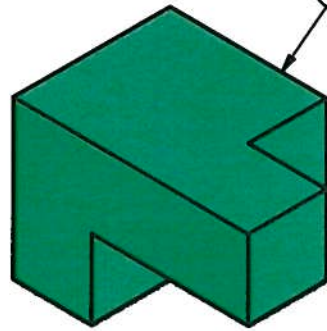
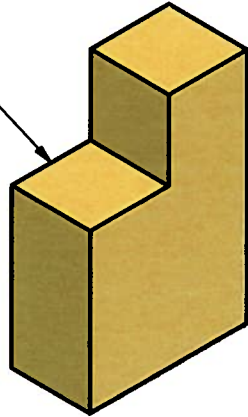


2

1

B

B



A

A

Parts List

ITEM	QTY	PART NUMBER	DESCRIPTION
1	1	blue	5
2	1	purple	6
3	1	yellow	5
4	1	orange	5
5	1	green	6

 MEMORIAL HIGH SCHOOL
ACADEMY OF ENGINEERING

a Project Lead The Way School

TITLE

Puzzle Cube

SIZE

A

DATE

10/23/2008

FIGURE No.

Puzzle 2

PER

6

NAME

Amy Rasplicka

SCORE

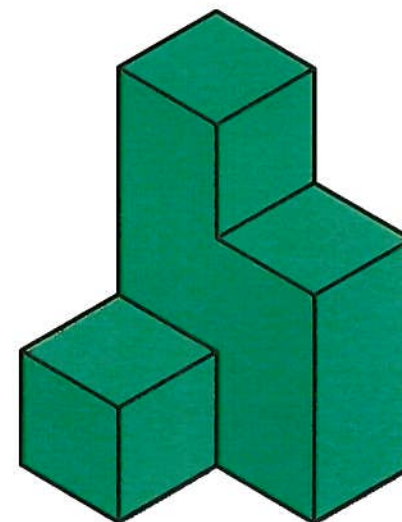
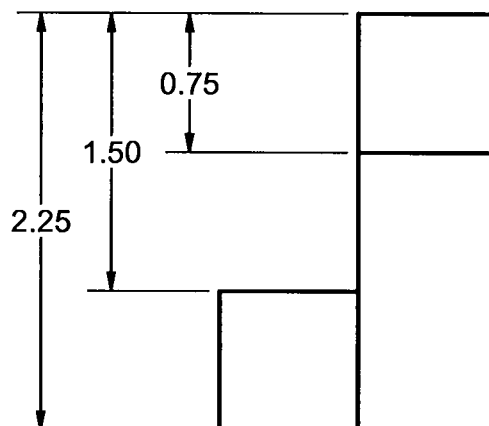
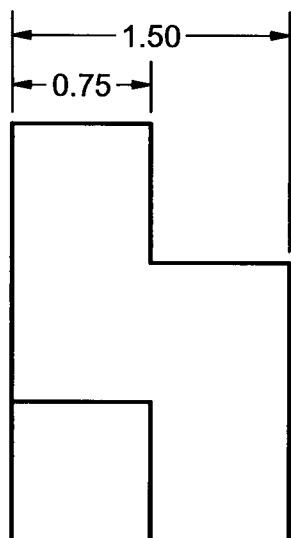
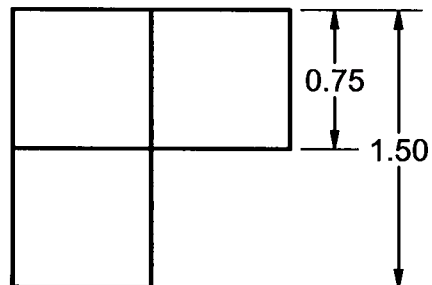
2

2

1

B

B



A

A

MEMORIAL HIGH SCHOOL
ACADEMY OF ENGINEERING
a Project Lead The Way School

TITLE

PUZZLE CUBE

SIZE

A

DATE

10/21/2008

FIGURE No.

green

PER

6

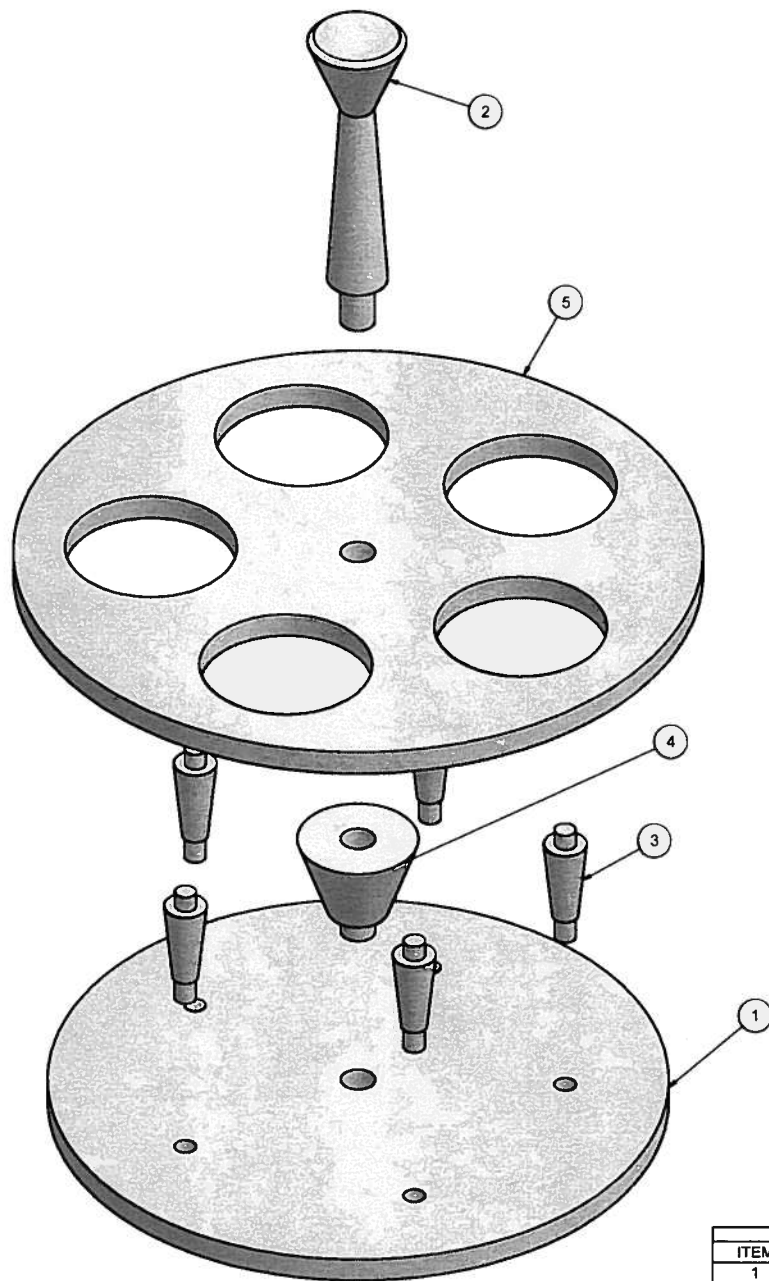
NAME

Amy Rasplicka

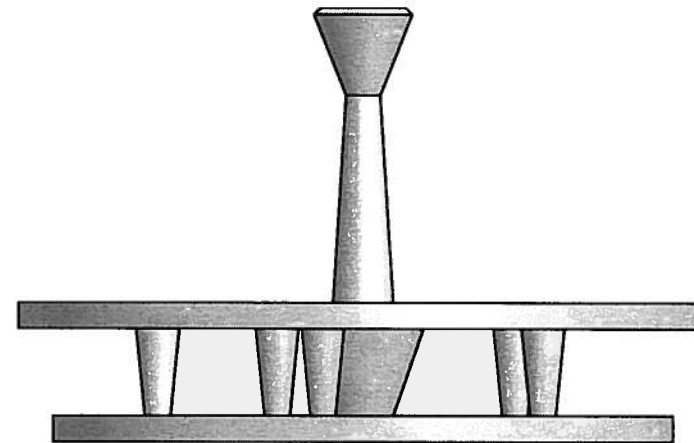
SCORE

2

H:\2010\Rasplicka_Amy_931516\2008-2009\Engineering\Puzzle Cube\green.ipt



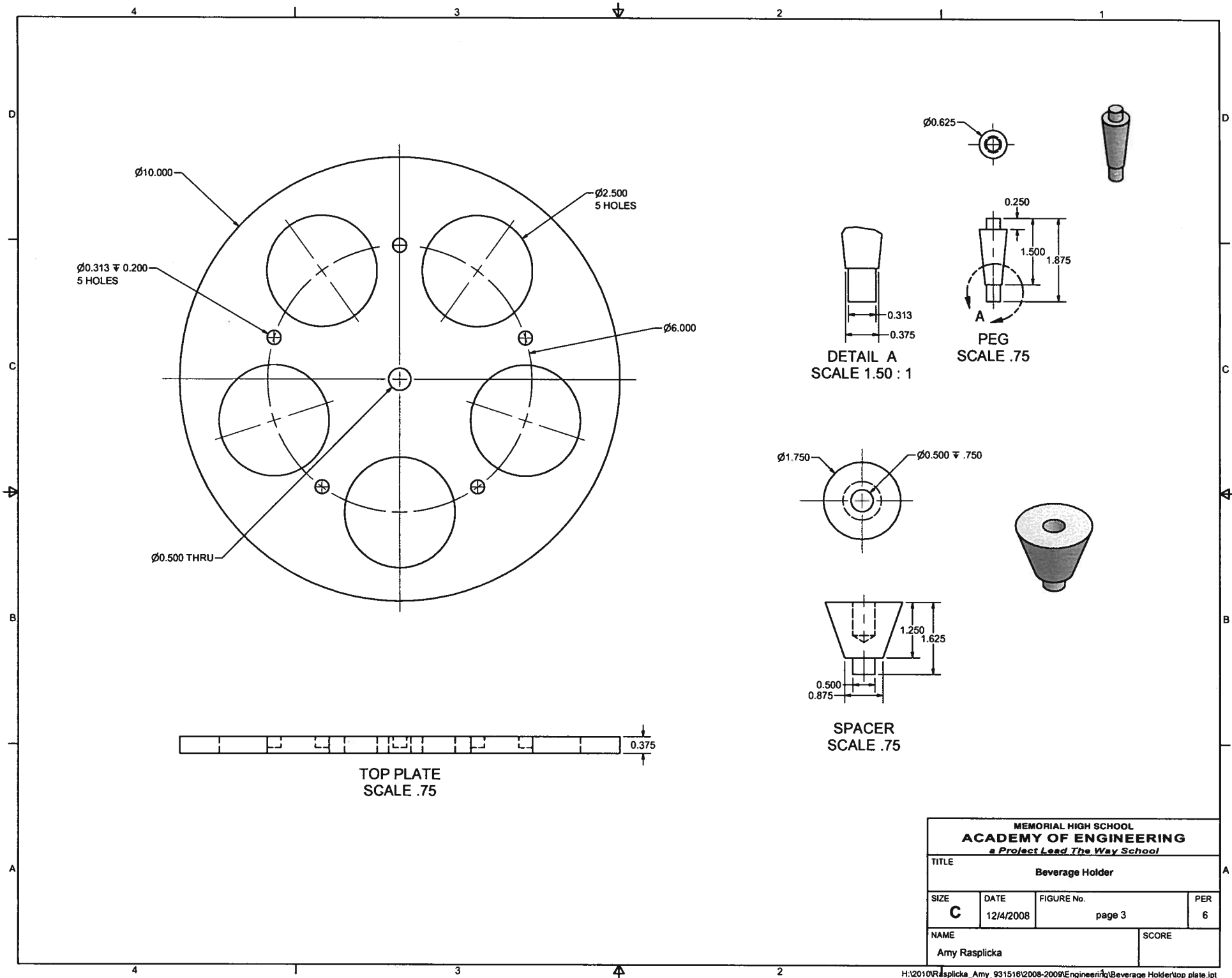
EXPLODED VIEW
SCALE .75



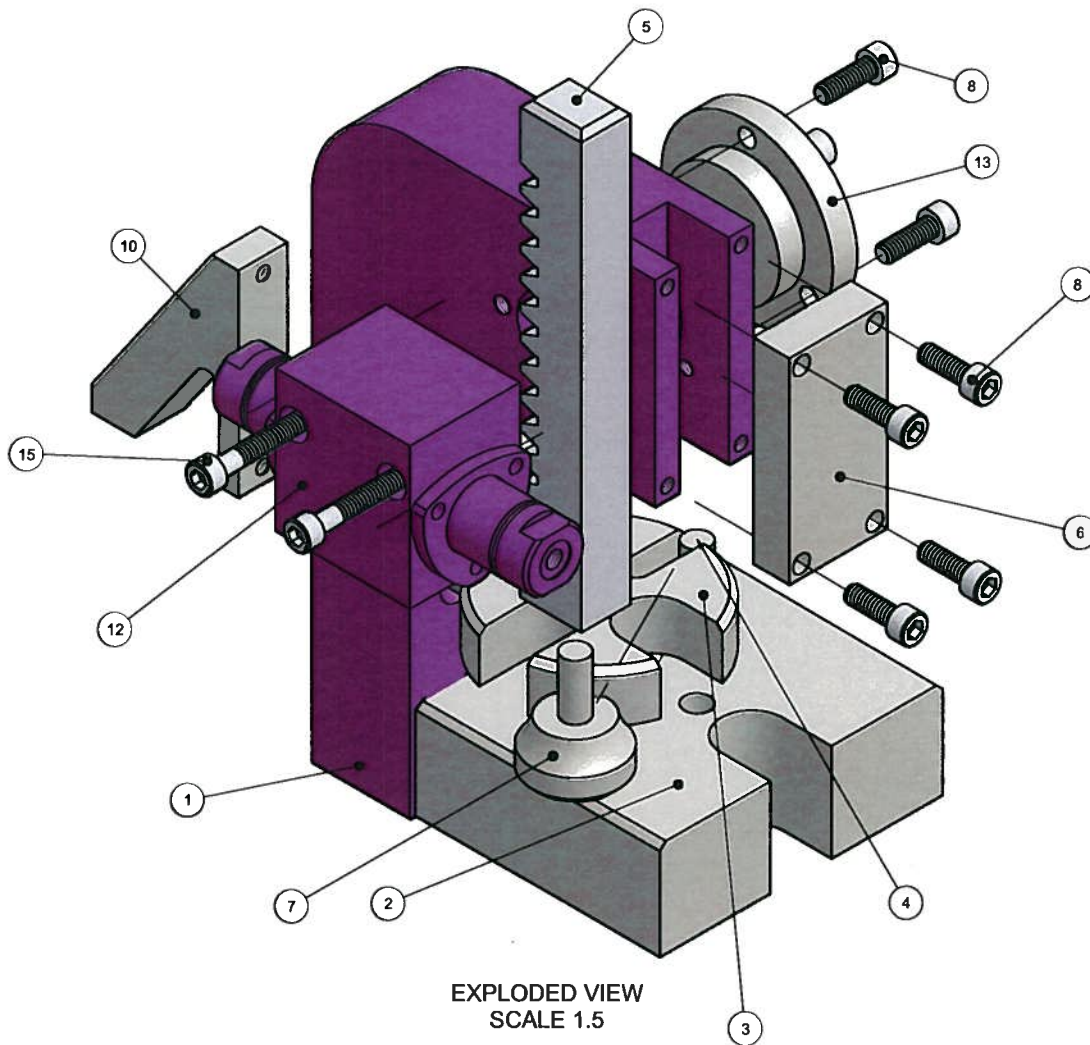
ASSEMBLED VIEW
SCALE .75

Parts List			
ITEM	QTY	PART NUMBER	DESCRIPTION
1	1	bottom plate	WOOD
2	1	handle	WOOD
3	5	peg	WOOD
4	1	spacer	WOOD
5	1	top plate	WOOD

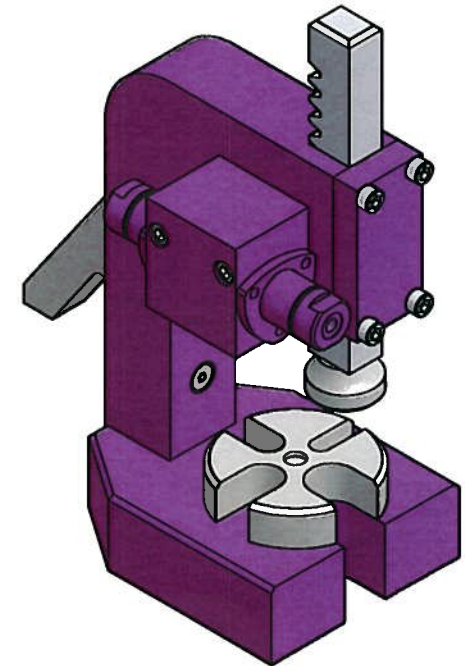
MEMORIAL HIGH SCHOOL ACADEMY OF ENGINEERING <i>a Project Lead The Way School</i>			
TITLE BEVERAGE HOLDER			
SIZE C	DATE 12/8/2008	FIGURE No. Page 2	PER 6
NAME Amy Rasplicka			SCORE



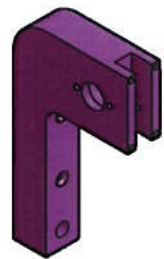
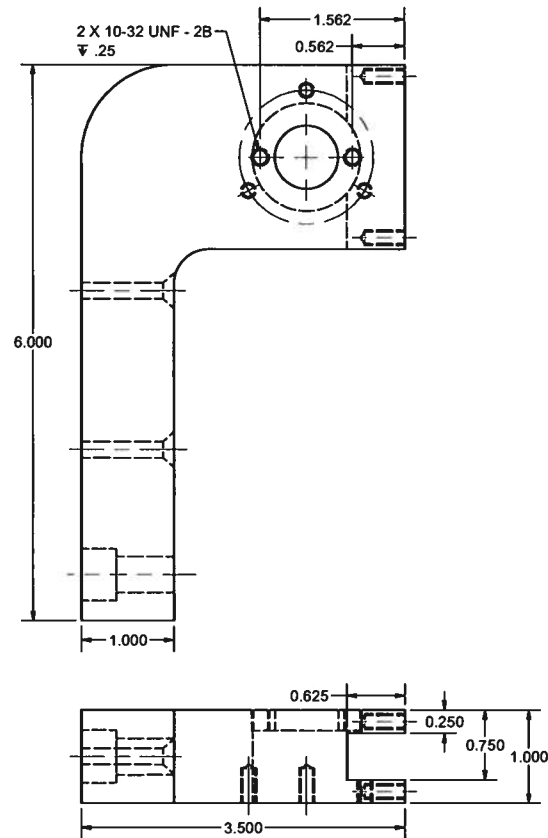
MEMORIAL HIGH SCHOOL ACADEMY OF ENGINEERING <i>a Project Lead The Way School</i>			
TITLE Beverage Holder			
SIZE C	DATE 12/4/2008	FIGURE No. page 3	PER 6
NAME Amy Rasplicka			SCORE



Parts List				
ITEM	QTY	PART NUMBER	DESCRIPTION	MATERIAL
1	1	column		AL 6061
2	1	base		AL 6061
3	1	table		AL 6061
4	1	table pin	8-32 UNC X .50 CAP SCREW	AL 6061
5	1	rack		AL 6061
6	1	cover plate		AL 6061
7	1	rack pad		AL 6061
8	7	cover plate screw		STL
9	1	column screw	3/8 - 16 UNC X 1.00 CAP SCREW	STL
10	1	punch holder		AL 6061
11	2	punch holder screw	8 - 32 UNC X 1.25 FLAT CSK HEAD CAP SCREW	STL
12	1	rotary actuator	BIMBA PT-006360-A1DV	
13	1	gear plate		AL 6061
14	1	rotary actuator 2	BIMBA PT-006360-A1DV	
15	2	actuator screw	8-32 UNC X 1.25 CAP SCREW GROUND TO 1.1 LENGTH	STL



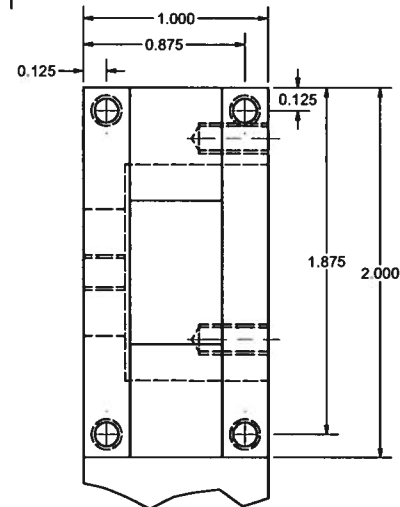
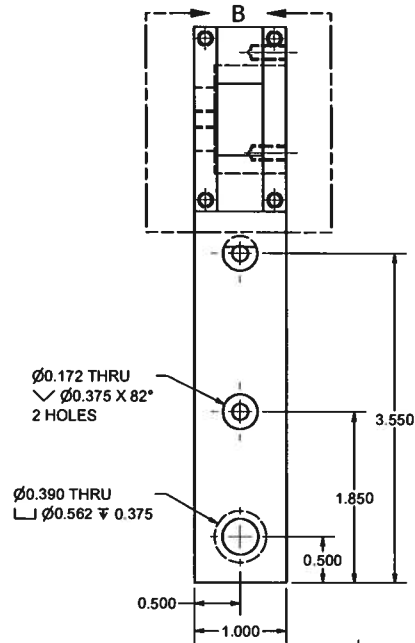
MEMORIAL HIGH SCHOOL ACADEMY OF ENGINEERING <i>a Project Lead The Way School</i>			
TITLE Arbor Press			
SIZE C	DATE 1/14/2009	FIGURE No. 1	PER 6
NAME Amy Rasplicka			SCORE



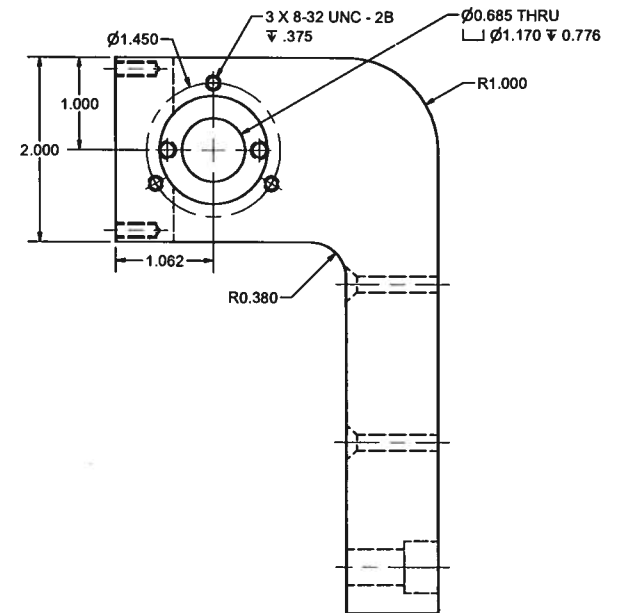
FRONT
 SCALE .5



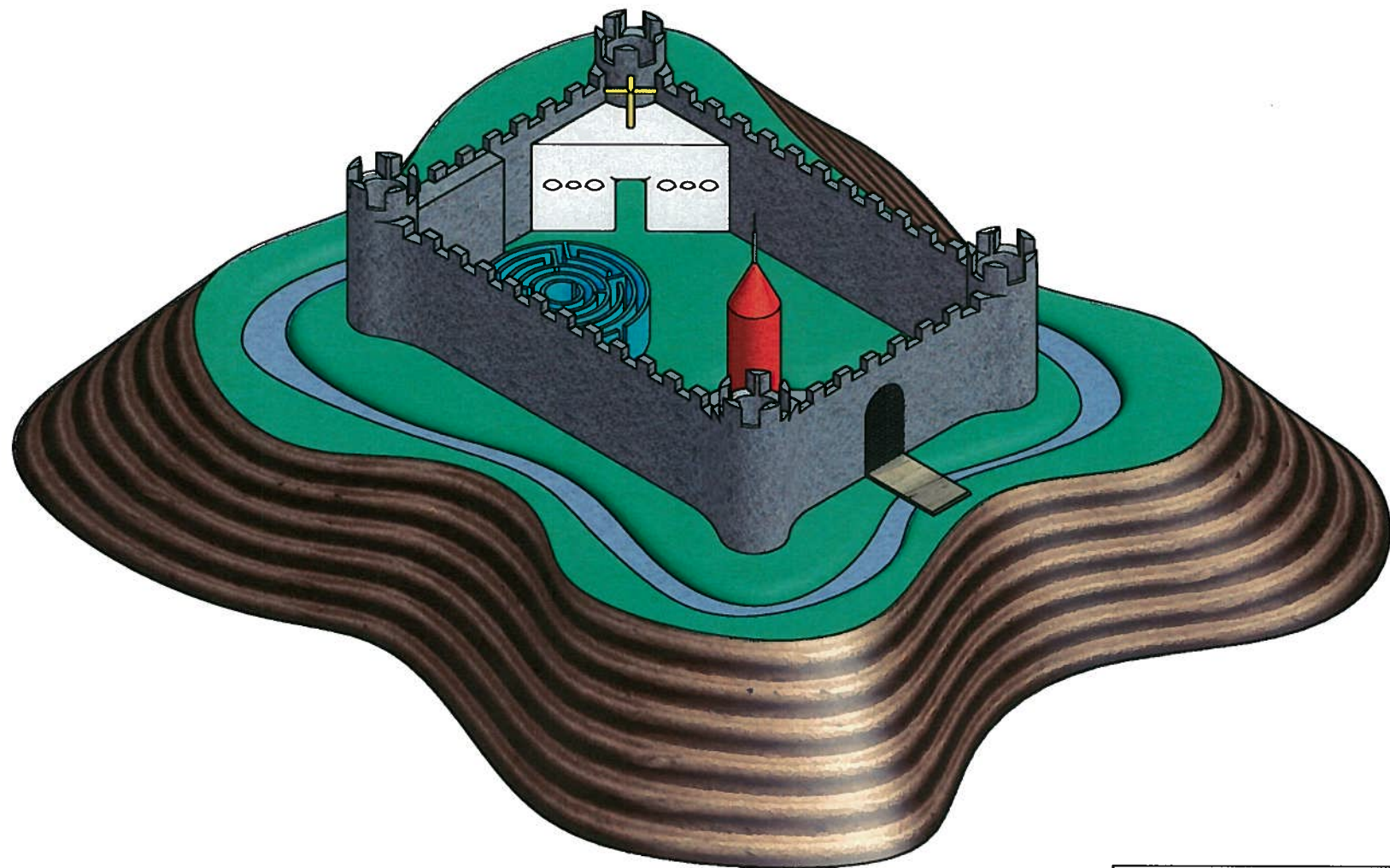
REAR
 SCALE .5



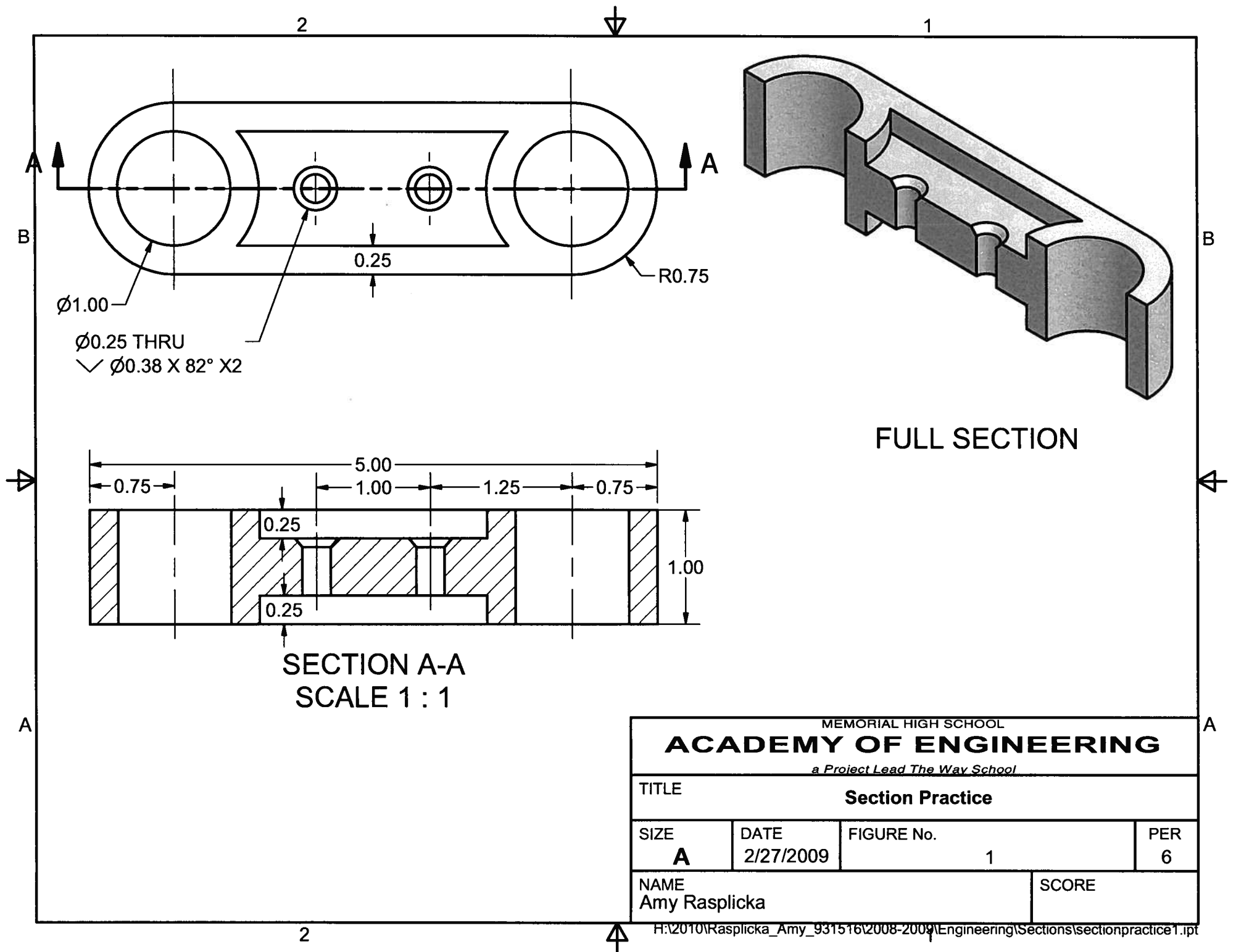
DETAIL B
 SCALE 2 : 1



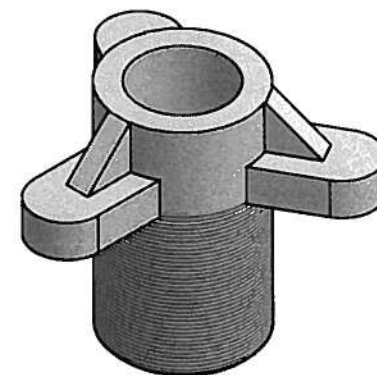
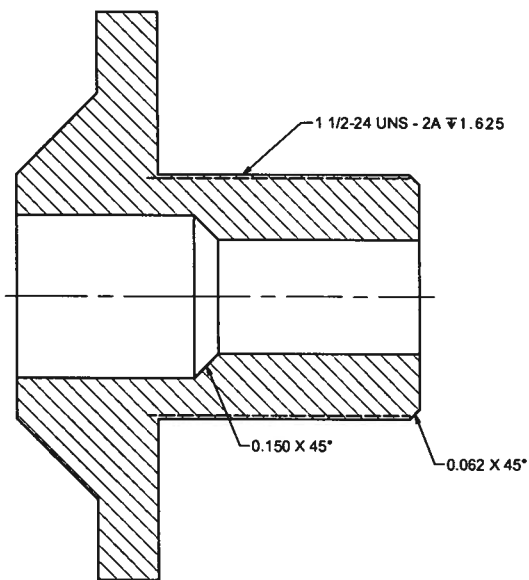
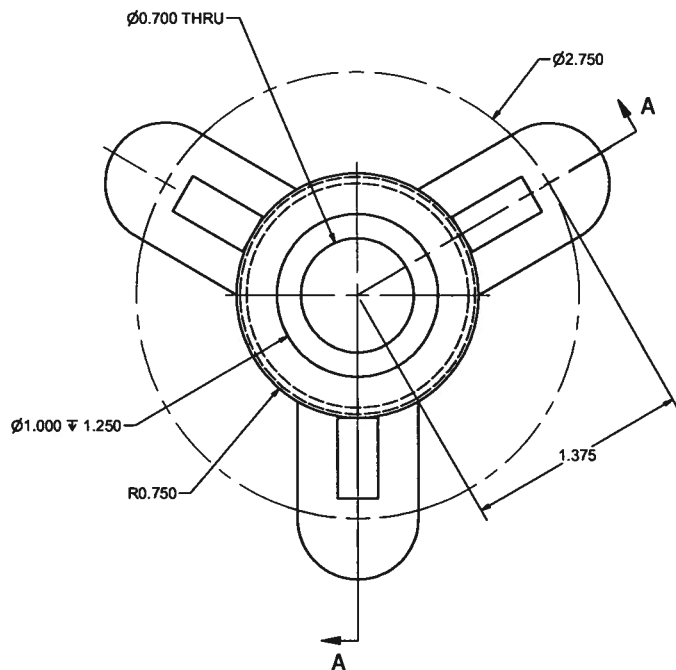
MEMORIAL HIGH SCHOOL ACADEMY OF ENGINEERING <i>a Project Lead The Way School</i>			
TITLE Arbor Press			
SIZE C	DATE 1/13/2009	FIGURE No. Punch Holder	PER 6
NAME Amy Rasplicka			SCORE



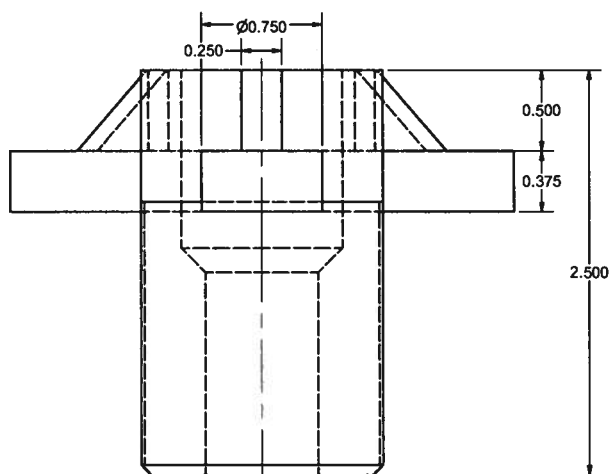
MEMORIAL HIGH SCHOOL ACADEMY OF ENGINEERING <i>a Project Lead The Way School</i>			
TITLE Castle			
SIZE C	DATE 2/3/2009	FIGURE No. Isometric View	PER 6
NAME Amy Rasplicka			SCORE



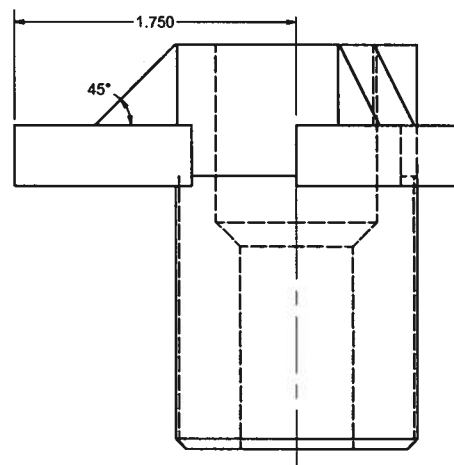
MEMORIAL HIGH SCHOOL			
ACADEMY OF ENGINEERING			
<i>a Project Lead The Way School</i>			
TITLE Section Practice			
SIZE A	DATE 2/27/2009	FIGURE No. 1	PER 6
NAME Amy Rasplicka			SCORE



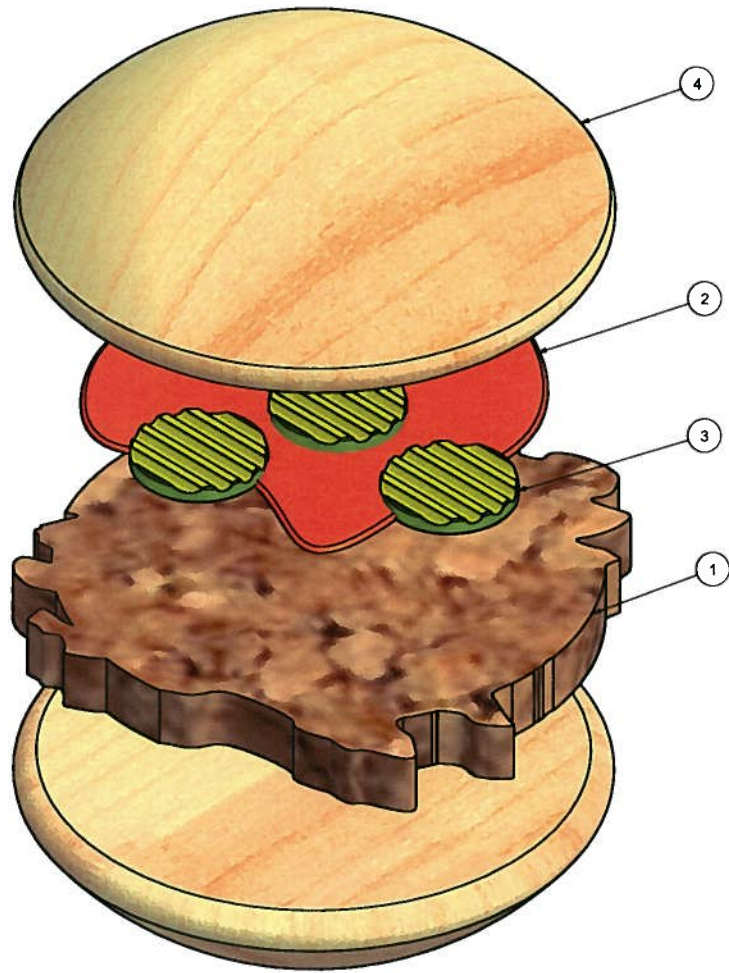
SCALE 1.3



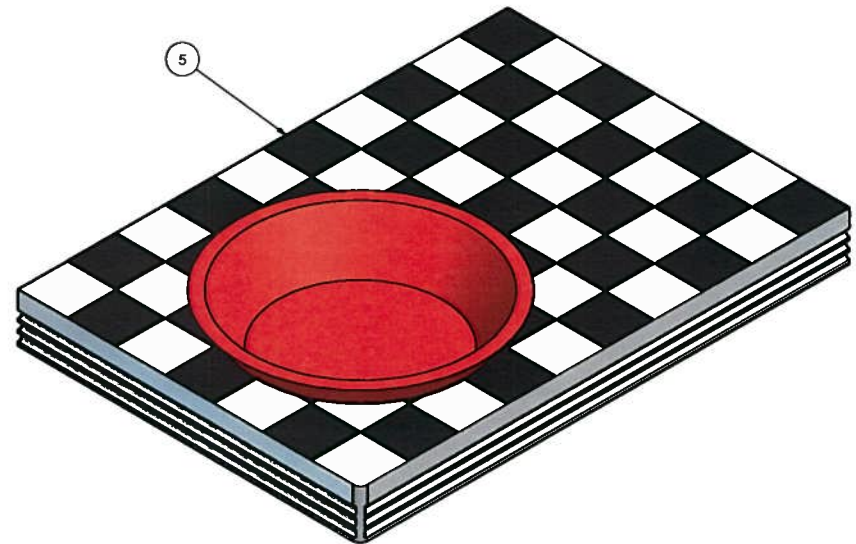
SCALE 1.75



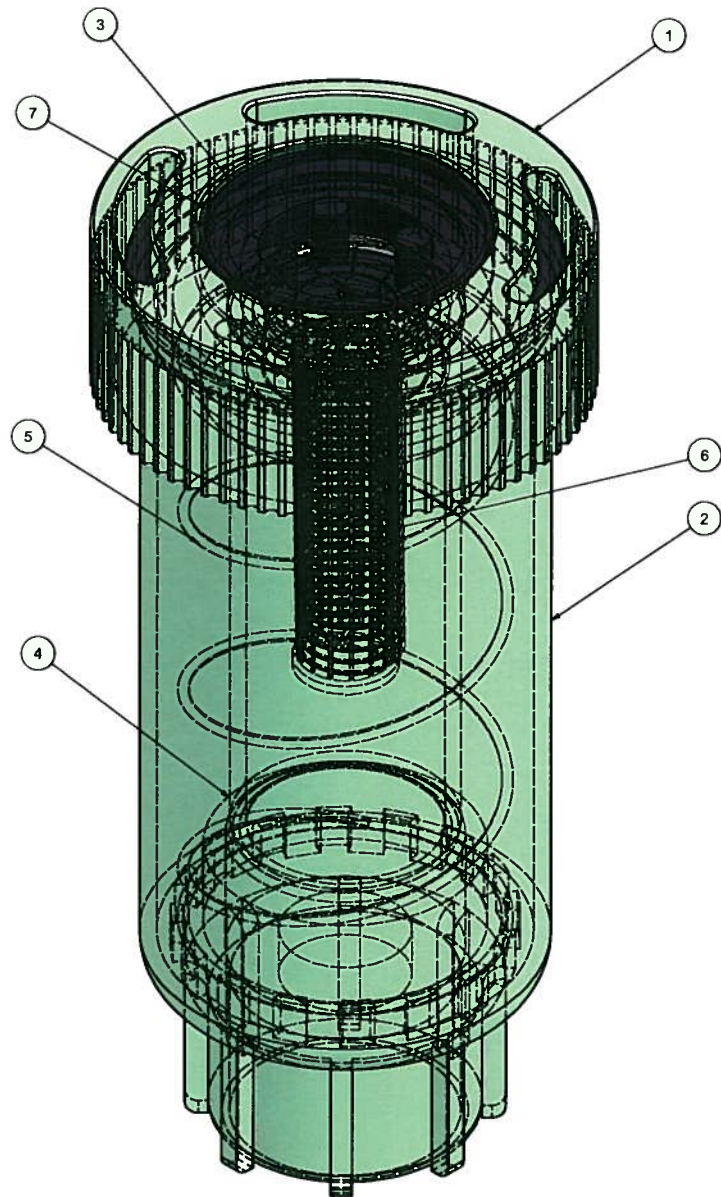
MEMORIAL HIGH SCHOOL ACADEMY OF ENGINEERING <i>a Project Lead The Way School</i>			
TITLE Section Practice			
SIZE C	DATE 3/2/2009	FIGURE No. 5	PER 6
NAME Amy Rasplicka			SCORE



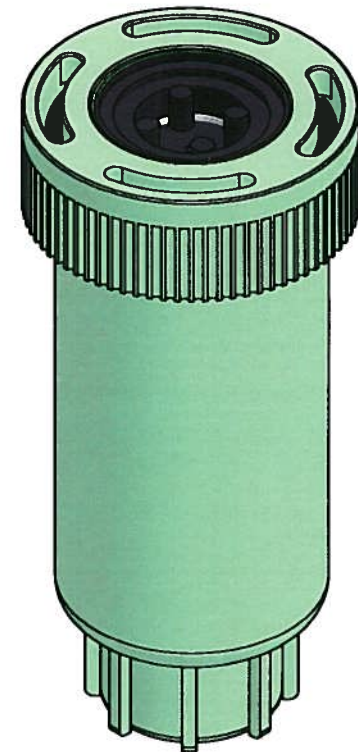
Parts List			
ITEM	QTY	PART NUMBER	DESCRIPTION
1	1	meat	"a boneless breast of chicken seasoned to perfection, hand-breaded, and pressure-cooked in peanut oil"
2	1	sauce	Polynesian
3	3	pickle	dill
4	2	bun	"toasted and buttered"
5	1	table and fast food basket	1950's style



MEMORIAL HIGH SCHOOL ACADEMY OF ENGINEERING <i>a Project Lead The Way School</i>			
TITLE Fast Food			
SIZE C	DATE 4/3/2009	FIGURE No. Chickfila Chicken Sandwich	PER 6
NAME Amy Rasplicka			SCORE

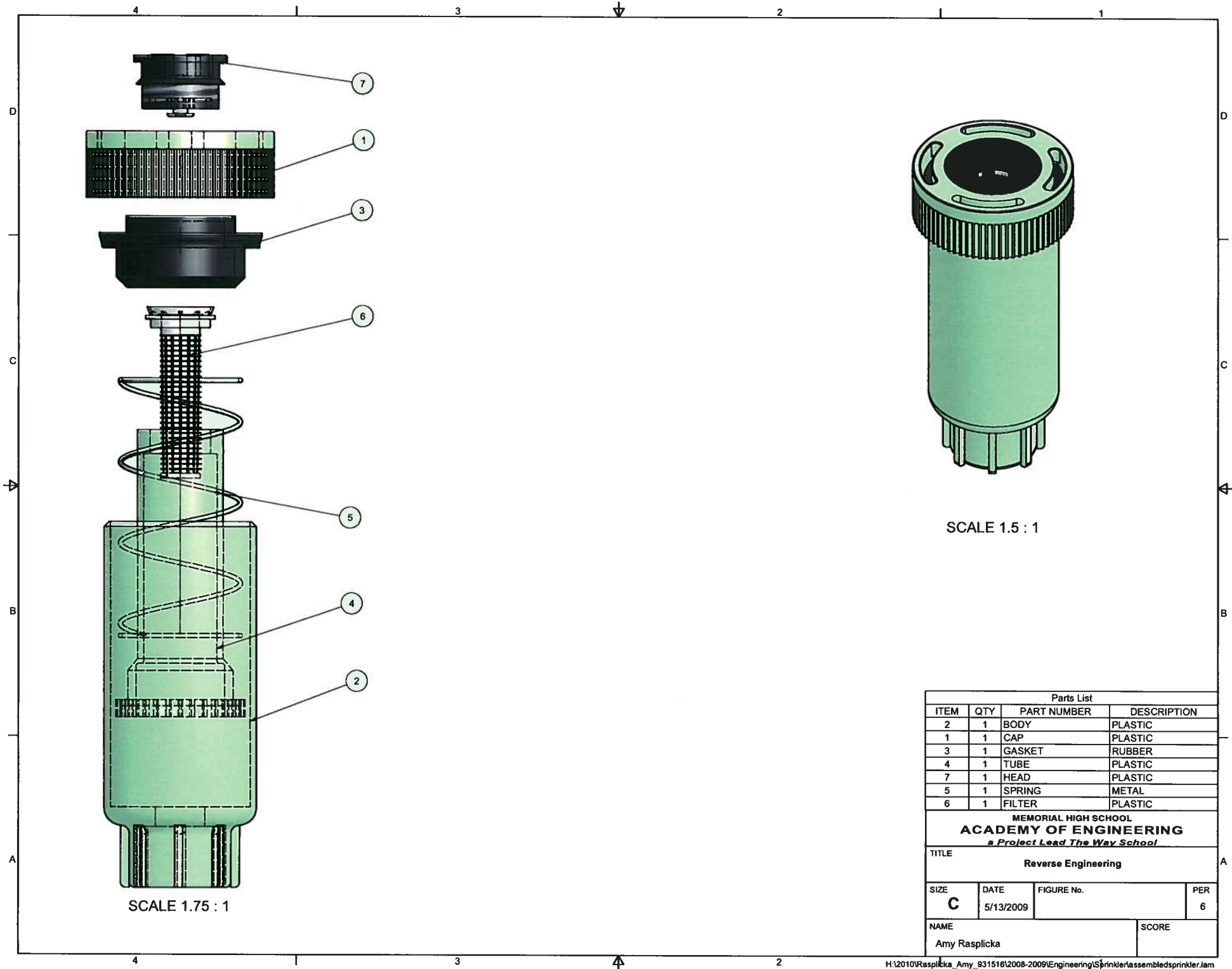


SCALE 3 : 1



SCALE 2 : 1

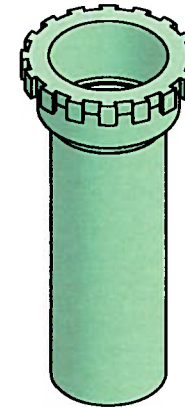
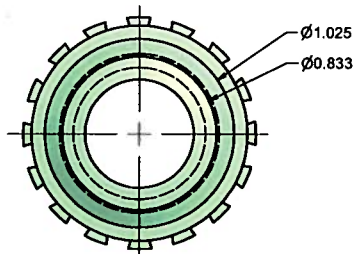
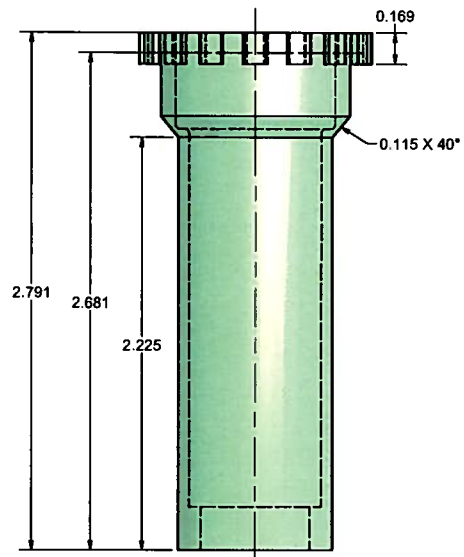
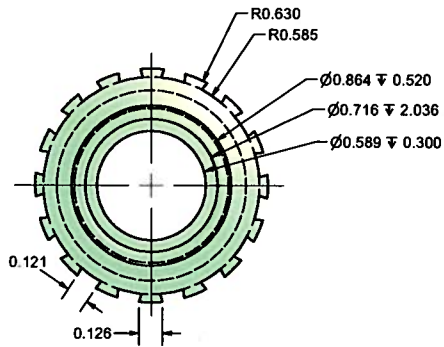
Parts List				
ITEM	QTY	PART NUMBER	DESCRIPTION	
2	1	BODY	PLASTIC	
1	1	CAP	PLASTIC	
3	1	GASKET	RUBBER	
4	1	TUBE	PLASTIC	
7	1	HEAD	PLASTIC	
5	1	SPRING	METAL	
6	1	FILTER	PLASTIC	
<p align="center">MEMORIAL HIGH SCHOOL ACADEMY OF ENGINEERING <i>a Project Lead The Way School</i></p>				
TITLE				
Sprinkler				
SIZE	DATE	FIGURE No.		PER
C	5/13/2009			6
NAME			SCORE	
Amy Rasplicka				



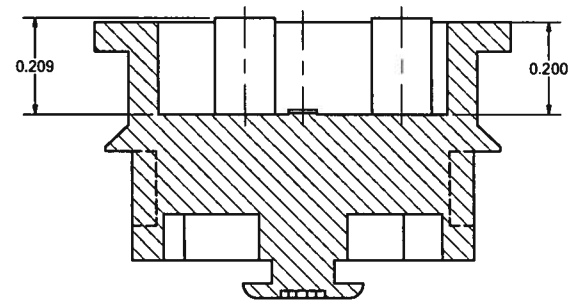
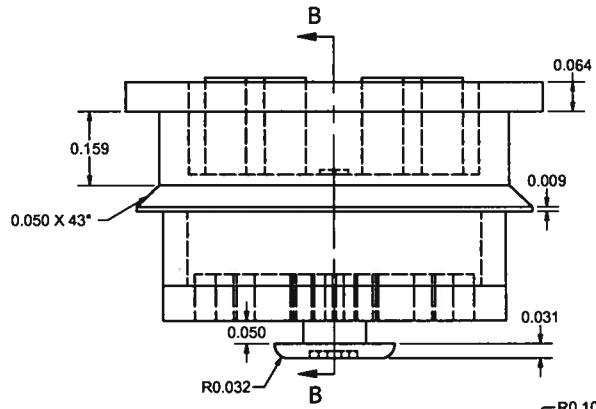
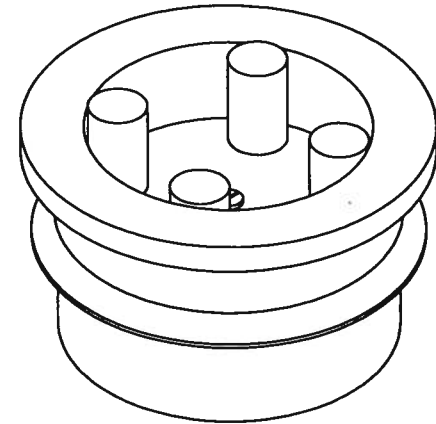
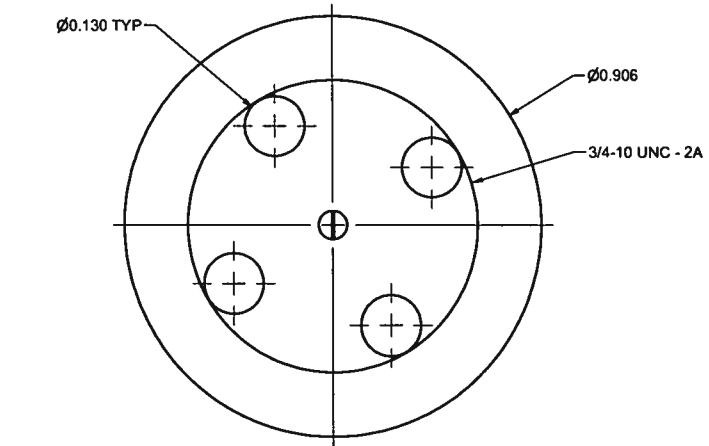
SCALE 1.75 : 1

SCALE 1.5 : 1

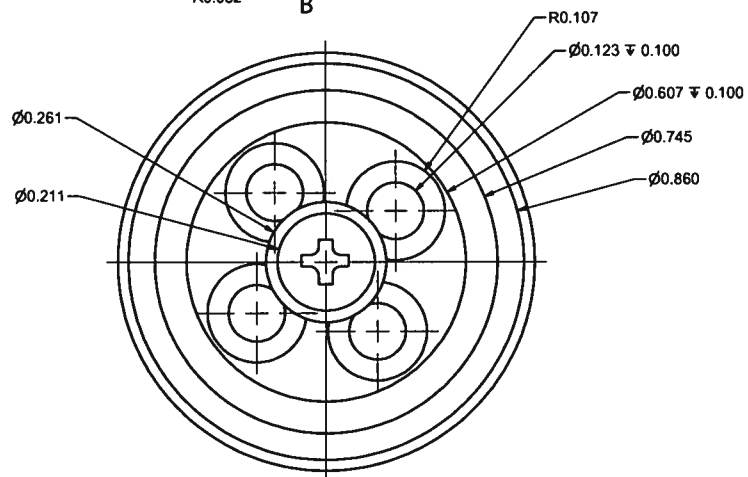
Parts List			
ITEM	QTY	PART NUMBER	DESCRIPTION
2	1	BODY	PLASTIC
1	1	CAP	PLASTIC
3	1	GASKET	RUBBER
4	1	TUBE	PLASTIC
7	1	HEAD	PLASTIC
5	1	SPRING	METAL
6	1	FILTER	PLASTIC
MEMORIAL HIGH SCHOOL ACADEMY OF ENGINEERING <i>a Project Lead The Way School</i>			
TITLE Reverse Engineering			
SIZE C	DATE 5/13/2009	FIGURE No.	PER 6
NAME Amy Rasplicka			SCORE



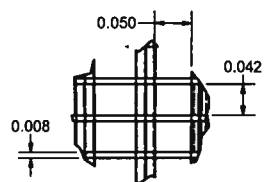
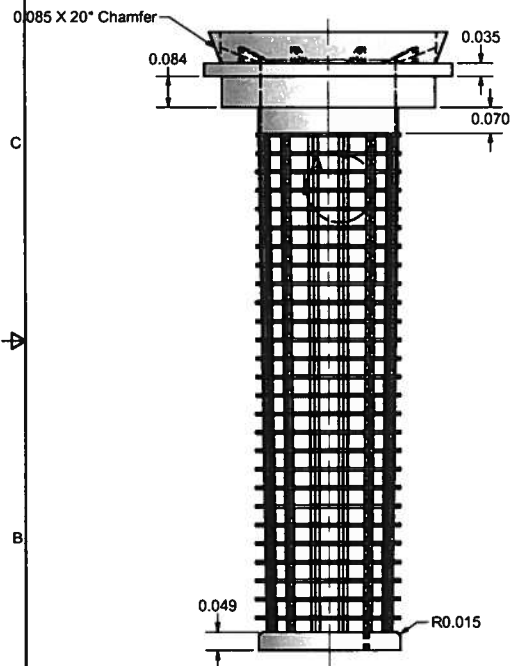
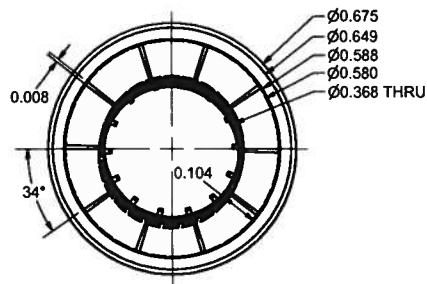
MEMORIAL HIGH SCHOOL ACADEMY OF ENGINEERING <i>a Project Lead The Way School</i>			
TITLE Reverse Engineering			
SIZE C	DATE 5/11/2009	FIGURE No. tube	PER 6
NAME Amy Raplicka			SCORE



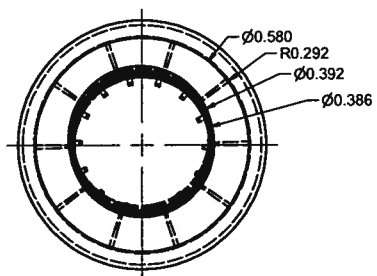
SECTION B-B
SCALE 5 : 1



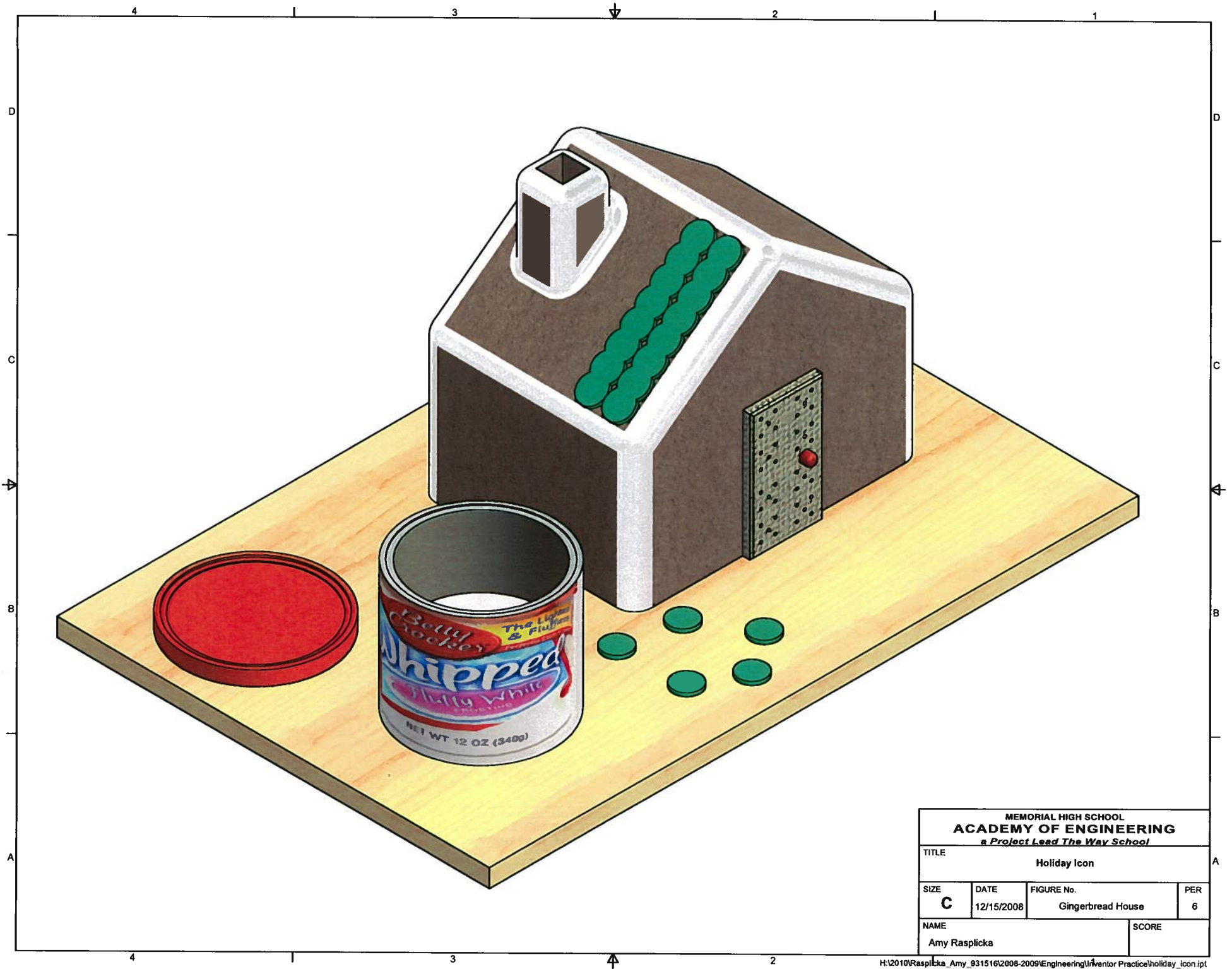
MEMORIAL HIGH SCHOOL ACADEMY OF ENGINEERING <i>a Project Lead The Way School</i>			
TITLE Reverse Engineering			
SIZE C	DATE 4/7/2008	FIGURE No. head	PER 6
NAME Amy Rasplicka			SCORE



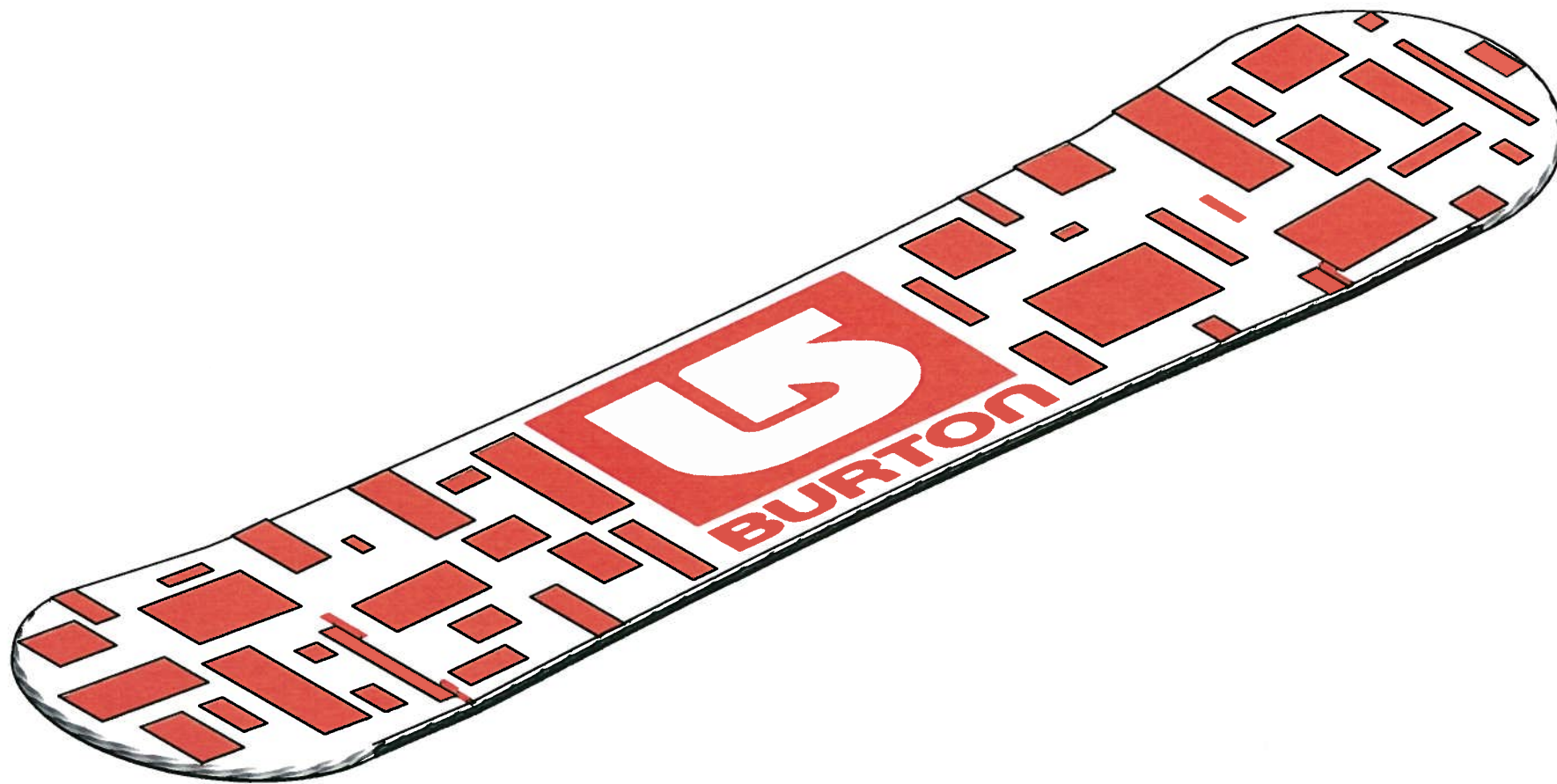
DETAIL A
SCALE 8 : 1



MEMORIAL HIGH SCHOOL ACADEMY OF ENGINEERING <i>a Project Lead The Way School</i>			
TITLE Reverse Engineering			
SIZE C	DATE 4/7/2008	FIGURE No. filter	PER 6
NAME Amy Rasplicka			SCORE



MEMORIAL HIGH SCHOOL ACADEMY OF ENGINEERING <i>a Project Lead The Way School</i>			
TITLE Holiday Icon			
SIZE C	DATE 12/15/2008	FIGURE No. Gingerbread House	PER 6
NAME Amy Rasplicka			SCORE



MEMORIAL HIGH SCHOOL ACADEMY OF ENGINEERING <i>a Project Lead The Way School</i>			
TITLE Spring Icon			
SIZE C	DATE 3/11/2009	FIGURE No. Burton Snowboard	PER 6
NAME Amy Rasplicka			SCORE